



Service Facts

ComfortLink™ II System Heat Pump 4TWZ0036B1000A

IMPORTANT — This document contains a wiring diagram, a parts list, and service information. This is customer property and is to remain with this unit. Please return to service information pack upon completion of work.

⚠ WARNING: HAZARDOUS VOLTAGE - DISCONNECT POWER and DISCHARGE CAPACITORS BEFORE SERVICING

PRODUCT SPECIFICATIONS

OUTDOOR UNIT ①②	4TWZ0036B1000A
POWER CONNS. — V/PH/HZ ③	208/230/1/60
MIN. BRCH. CIR. AMPACITY	20
BR. CIR. PROT. RTG. — MAX. (AMPS)	30
COMPRESSOR	CLIMATUFF®
NO. USED - NO. SPEEDS	2 - 2
VOLTS/PH/HZ	208/230/1/60
R.L. AMPS ⑦ - L.R. AMPS	13.7 - 60.0
FACTORY INSTALLED	
START COMPONENTS ⑧	YES
INSULATION/SOUND BLANKET	YES
COMPRESSOR HEAT	YES
OUTDOOR FAN	PROPELLER
DIA. (IN.) - NO. USED	27.6 - 1
TYPE DRIVE - NO. SPEEDS	DIRECT - 2
CFM @ 0.0 IN. W.G. ④ (HIGH/LOW)	4110/3190
NO. MOTORS - HP	1 - 1/3
MOTOR R.P.M. (HIGH/LOW)	653/493
VOLTS/PH/HZ	200/230/1/60
F.L. AMPS	2.80
OUTDOOR COIL — TYPE	SPINE FIN™
ROWS - F.P.I.	1 - 24
FACE AREA (SQ. FT.)	30.79
TUBE SIZE (IN.)	3/8
REFRIGERANT CONTROL	Expansion Valve
REFRIGERANT	R-410A
LBS. — R-410A (O.D. UNIT) ⑤	11 LBS. - 2 OZ.
FACTORY SUPPLIED	YES
LINE SIZE - IN. O.D. GAS ⑥	3/4
LINE SIZE - IN. O.D. LIQ. ⑥	3/8
CHARGING SPECIFICATION	
SUBCOOLING	See Charging Chart (page 3)
DIMENSIONS	H X W X D
CRATED (IN.)	57.4 X 35.1 X 38.7
WEIGHT	
SHIPPING (LBS.)	395
NET (LBS.)	345

⚠ WARNING

THIS INFORMATION IS INTENDED FOR USE BY INDIVIDUALS POSSESSING ADEQUATE BACKGROUNDS OF ELECTRICAL AND MECHANICAL EXPERIENCE. ANY ATTEMPT TO REPAIR A CENTRAL AIR CONDITIONING PRODUCT MAY RESULT IN PERSONAL INJURY AND OR PROPERTY DAMAGE. THE MANUFACTURER OR SELLER CANNOT BE RESPONSIBLE FOR THE INTERPRETATION OF THIS INFORMATION, NOR CAN IT ASSUME ANY LIABILITY IN CONNECTION WITH ITS USE.

NOTICE: The manufacturer has a policy of continuous product and product data improvement and reserves the right to change design and specifications without notice.

4TWZ0036B-SF-1A

⚠ CAUTION

UNIT CONTAINS R-410A REFRIGERANT!
R-410A OPERATING PRESSURE EXCEEDS THE LIMIT OF R-22. PROPER SERVICE EQUIPMENT IS REQUIRED. FAILURE TO USE PROPER SERVICE TOOLS MAY RESULT IN EQUIPMENT DAMAGE OR PERSONAL INJURY.

SERVICE

USE ONLY R-410A REFRIGERANT AND APPROVED POE/AB COMPRESSOR OIL.

TUBING INFORMATION

Tubing Sizes		Tubing Length	Additional Refrigerant
Suction	Liquid		
3/4"	3/8"	20'	3 oz.
3/4"	3/8"	30'	9 oz.
3/4"	3/8"	40'	15 oz.
3/4"	3/8"	50'	21 oz.
3/4"	3/8"	60'	27 oz.
3/4"	3/8"	70'	32 oz.
3/4"	3/8"	80'	38 oz.

Tubing lengths in excess of eighty (80) feet see application software.

- ① Certified in accordance with the Air-Source Unitary Air-conditioner Equipment certification program, which is based on AHRI standard 210/240. In order to achieve AHRI standard rating, the indoor fan time delay on the comfort control must be enabled.
- ② Rated in accordance with AHRI standard 270.
- ③ Calculated in accordance with Natl. Elec. Codes. Use only HACR circuit breakers or fuses.
- ④ Standard Air — Dry Coil — Outdoor
- ⑤ This value approximate. For more precise value see unit nameplate.
- ⑥ Max. linear length 80 ft.; Max. lift - Suction 25 ft.; Max lift - Liquid 25 ft. For greater length consult refrigerant piping software Pub. No. 32-3312-0* (* denotes latest revision).
- ⑦ This value shown for compressor RLA on the unit nameplate and on this specification sheet is used to compute minimum branch circuit ampacity and max. fuse size. The value shown is the branch circuit selection current.
- ⑧ NO means no start components. YES means quick start kit components. PTC means positive temperature coefficient starter.

⚠ CAUTION

CONTAINS REFRIGERANT!

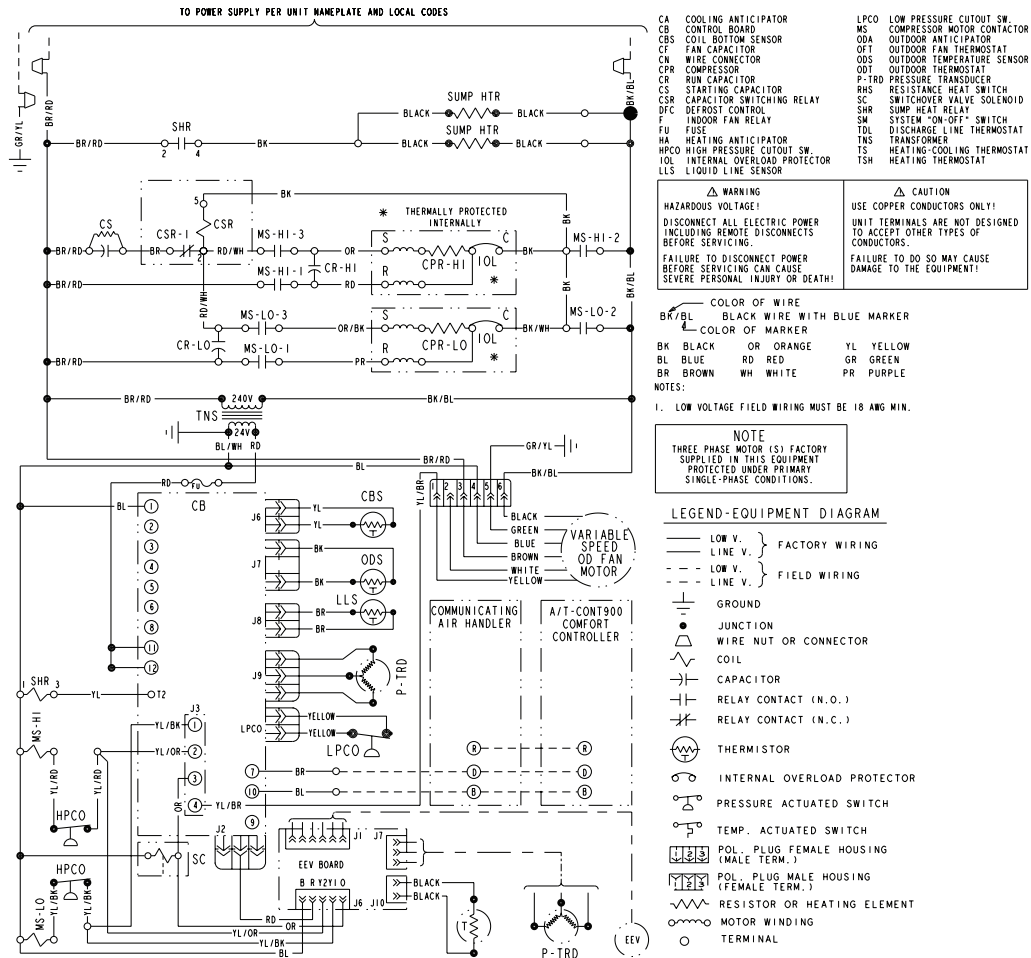
SYSTEM CONTAINS OIL AND REFRIGERANT UNDER HIGH PRESSURE. RECOVER REFRIGERANT TO RELIEVE PRESSURE BEFORE OPENING SYSTEM.

Failure to follow proper procedures can result in personal illness or injury or severe equipment damage.

⚠ CAUTION

RECONNECT ALL GROUNDING DEVICES.
ALL PARTS OF THIS PRODUCT CAPABLE OF CONDUCTING ELECTRICAL CURRENT ARE GROUNDED. IF GROUNDING WIRES, SCREWS, STRAPS, CLIPS, NUTS OR WASHERS USED TO COMPLETE A PATH TO GROUND ARE REMOVED FOR SERVICE, THEY MUST BE RETURNED TO THEIR ORIGINAL POSITION AND PROPERLY FASTENED.

SCHEMATIC DIAGRAM



CHARGING METHOD

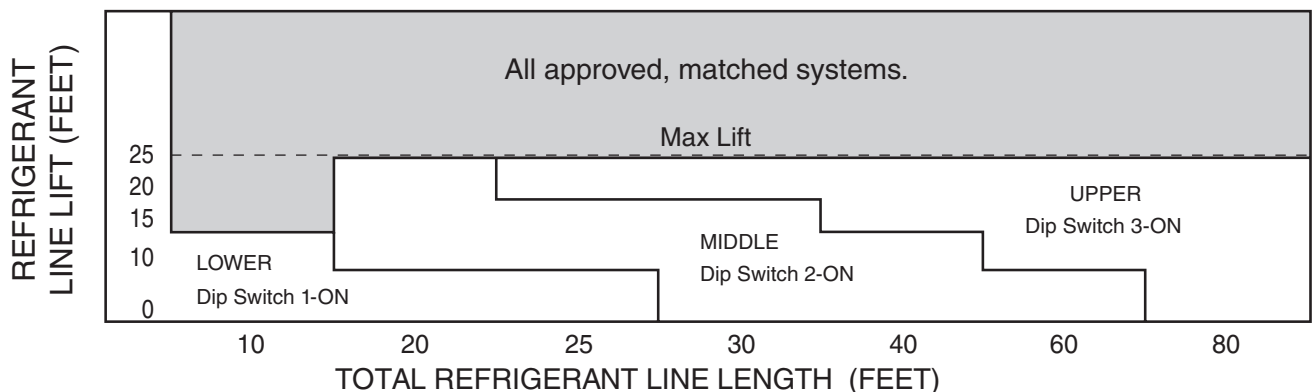
This model has ComfortLink™ II and Charge Assist™ features. Charge Assist™ can be used in cooling mode only.

For complete instructions on using Charge Assist™, please see page 4.

MANUAL CHARGING BELOW 55°F OD AMBIENT – IN HEATING MODE (HP MODELS ONLY)

1. The only recommended method of charging at outdoor ambients below 55°F, is to weigh in the charge in the heating mode.
2. Check liquid line temperature and pressure (at the OD valves) to obtain a minimum of 10°F subcooling.
3. It is important to return in the spring or summer to accurately charge the system in the cooling mode at outdoor ambients from 55°F-120°F.

SUBCOOL CHARGING TABLE CORRECTIONS FOR LINE LENGTH AND RISE



[illegible]

1. Subcooling using the R-410A Refrigerant Charging Chart (in the cooling mode) is the only recommended method of charging between 55°F and 120°F ambient temperatures.
2. When charging for ambient temperatures above 120°F, charge to 10° subcooling. It is important to return when outdoor ambient temperature is between 55°F and 120°F to verify system charge per these instructions.
3. For best results – the indoor temperature should be kept between 70°F to 80°F. Add system heat if needed.
4. At startup, or whenever charge is removed or added, the system must be operated for a minimum twenty (20) minutes to stabilize before accurate measurements can be made. (Feature of Charge Assist™)
5. Measure Liquid Line Temperature and Refrigerant Pressure at service valves. (Not required with Charge Assist.™)
6. Determine total refrigerant line length, and height (lift) if indoor section is indicated in the Subcool Charging Corrections Table on page 2 .
7. Locate your liquid line temperature in the left column of the table, and the column. Add refrigerant to raise the pressure to match the table, or remove (20) minutes for the system conditions to stabilize before adjusting charge.
8. Charge Assist port is designed for liquid refrigerant charging.
9. When system is correctly charged, you can refer to System Pressure Control

3 TON HP R410A REFRIGERANT CHARGING CHART			
Liquid Temp (°F)	LIQUID GAGE PRESSURE (PSIG)		
	ONLY DIPSWITCH 1 ON **	ONLY DIPSWITCH 2 ON	ONLY DIPSWITCH 3 ON
	LOWER *	MIDDLE	UPPER
55	194	195	199
60	208	210	215
65	224	227	232
70	242	246	250
75	260	265	270
80	280	286	291
85	301	308	313
90	324	331	337
95	348	356	362
100	373	382	388
105	399	409	416
110	427	438	445
115	456	467	475
120	486	498	507
125	517	531	540

* Data is based on 11.5° of subcooling at a 95° ambient

** With AM7 or AM8: Dip switch 1 \equiv 10° of subcooling at 95° ambient

PRINTED FROM D155859P02 REV 4

Charge Assist™ (CA) Procedure with a Communicating Comfort Control

⚠ CAUTION

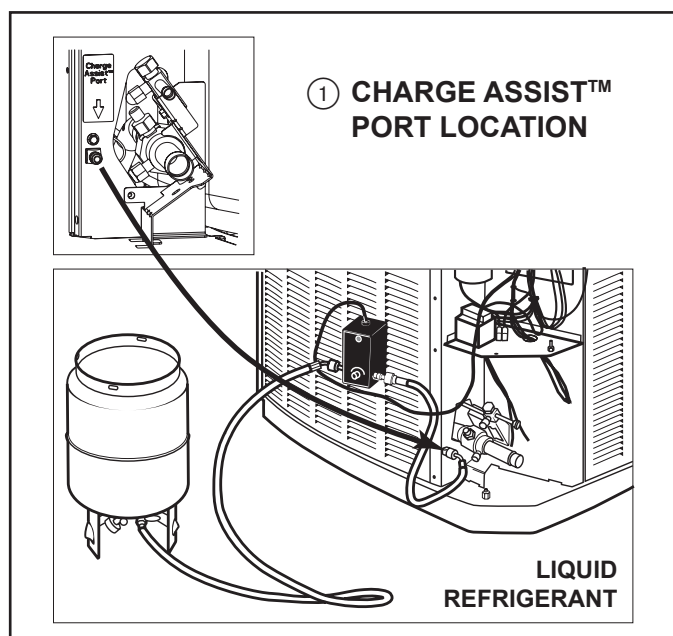
CONTAINS REFRIGERANT!

SYSTEM CONTAINS OIL AND REFRIGERANT UNDER HIGH PRESSURE. RECOVER REFRIGERANT TO RELIEVE PRESSURE BEFORE OPENING SYSTEM.

Failure to follow proper procedures can result in personal illness or injury or severe equipment damage.

NOTE: On the **Charge Assist™** control set the LINE LENGTH DIP SWITCHES before running system or entering **CA Mode**. See Subcool Charging Corrections Table on page 2.

The Communicating Comfort Control will auto-configure the system size and airflow requirement at power-up. The Charge Assist™ (CA) Mode will set the indoor blower to 100%, override any blower delays and run compressor 2nd stage. (Green LEDs Y1 and Y2 will be on. The Green **Status** LED will be turned off.)



Procedure

STEP 1:

Press **MODE** button (See Figure 2) for 2 seconds to enter the **CA** mode. The **CA** control takes control of the system and overrides the Communicating Comfort Control. The **Green STATUS** LED is turned OFF. The **CA** control will run the first stage compressor for one minute. Green LED Y1 is on. The CA control will then run the second stage compressor. Green LEDs Y1 and Y2 will then be ON. The **CA** control now starts its Charge Assist™ mode. The **CA** control will now check the operating Conditions before continuing the **CA** Mode.

NOTE: To stop the **CA** mode at anytime, press the **MODE** button. The **CA** control will then begin slowly flashing its Green **STATUS** LED indicating that the **CA** control is now in its normal operating mode.

⚠ WARNING

Live Electrical Components!

During installation, testing, servicing and troubleshooting of this product, it may be necessary to work with live electrical components. Failure to follow all electrical safety precautions when exposed to live electrical components could result in death or serious injury.

Outdoor Temperature (ODT) Must be between 55°F and 120°F. If ODT is below 55°F or above 120°F, the **ODT, OUT OF RANGE**, Red LED will flash ON and OFF for 30 seconds. This error condition causes the **CHARGING (STABILIZING)** Amber LED to flash 10 times. The **CA** control will then exit the **CA** mode and the Green **Status** LED begins to flash slowly.

Liquid Line Temperature (Must be within range) If this sensor is shorted or open - This error condition causes an 11 flash on **FAULT** LED.

Liquid Line Pressure (Must be above 90 psig) If the liquid pressure is below 90 psig, the **LOW PRESSURE** Red LED will turn on for 30 seconds. This error condition causes the **CA** control to flash its **CHARGING (STABILIZING)** Amber LED 10 times. The **CA** control will then exit the **CA** mode and it then begins flashing its Green **Status** LED slowly.

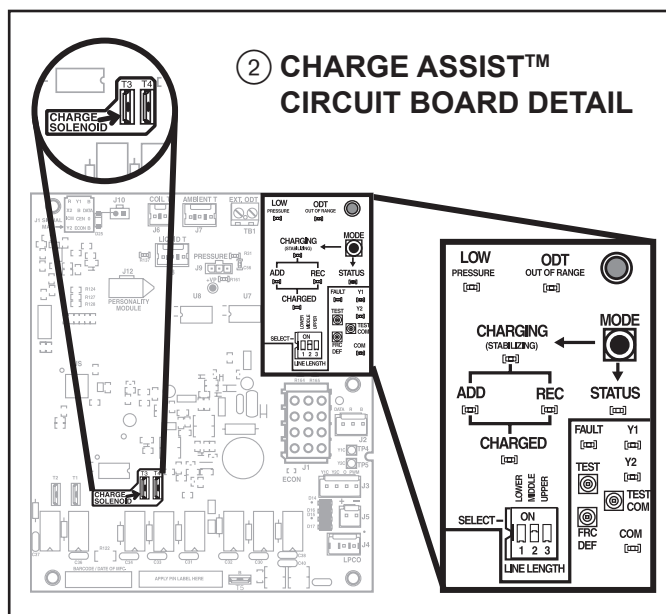
STEP 2:

Enter Stabilization Routine The **CHARGING (STABILIZING)** Amber LED will begin to flash.

The **CA** control will then indicate the time it will take for the refrigerant system to stabilize by flashing its **CHARGING (STABILIZING)** Amber LED. (See SUMMARY on page 7 for flash rate details.)

The **CA** control may run the system for up to twenty minutes to insure the refrigerant system is at a steady operating state. Once the system is at a steady operating state the **CA** control will enter the **Charging Routine**.

STEP 3:



CHARGING Routine

Charge Assist™ will follow one of the following routines.

STEP 4:

	STABILIZING LED	CHARGED LED	ADD LED	REC LED
CHARGED Routine (See Step 4)	OFF	ON	OFF	OFF
ADD Routine (See Step 5)	OFF	Flashing	ON	OFF
RECOVER Routine (See Step 6)	OFF	OFF	OFF	ON

CHARGED Routine

If the **CA** control determines the system is correctly charged, the **CHARGING (STABILIZING) Amber LED** will be turned **OFF** and the **CHARGED Green LED** will be turned **ON**.

The **CA** control will then exit the charge assist cycle and return the control of the system to the Communicating Comfort Control. The **Status Green LED** will be slowly flashing. The **CHARGED Green LED** will stay **ON** for 1 hour.

STEP 5:

ADD Routine If the **CA** control determines refrigerant is required, the **ADD Amber LED** will turn **ON** and the Green **CHARGED LED** will begin **FLASHING** according to the **CHARGED Green LED** flash Rate Schedule.

(See SUMMARY on page 7 for flash rate details.)

NOTE: For Automated charging, use BAYCAKT001AA. When utilizing a Charging accessory Solenoid Kit (BAYCAKT001-shown in Figure 3) refer to the instructions in the kit (18-HH15D1-*) for proper hook up. When the Amber **ADD LED** is ON the **CA** control board provides a 24 VAC power for the accessory solenoid. The **CA** control will turn off the 24 VAC power when the Amber **ADD LED** goes off.

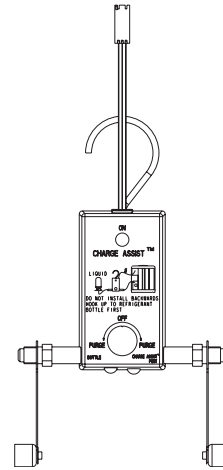
When refrigerant is being added, the **CA** control will **exit** the Charge Assist™ cycle if the liquid line pressure **does not increase by 4 psi in 50 minutes** or if the liquid line pressure **does not get within the 20 psi of the required charged pressure within 1 hour**.

Note: For Manual Charging

Once sufficient charge has been added, the Amber **ADD LED** will turn **OFF** and the Green **CHARGED LED** will be turned **ON**. When the Amber **ADD LED turns OFF; stop adding refrigerant**. The Green **CHARGED LED** will stay on for 5 minutes while the unit runs. The **CA** control will now exit the Charge Assist™ cycle and returns control to the Communicating Comfort Control.

STEP 6:

③ Charge Assist™ Solenoid Kit BAYCAKT001



Use for Auto Charging
(See Installer's Guide 18-HH15D1-*)

RECOVER Routine

If the **CA** control determines there is excessive refrigerant in the system, the **REC Red LED** will be turned ON. The **CA** control will lock the system off for one hour and it will then exit the **CA** cycle. The **REC Red LED** will stay ON for 1 hour. The **CA** control lock out period can be stopped by pressing the MODE button for 2 seconds. Status LED will be off during lockout.

NOTE: Personality Module (PM) contains model specific information needed for system operation - **Do Not Remove**.

NOTE: The word '**Wait**' will be displayed on the Communicating Comfort Control when the system is in the **CA** mode. The Communicating Comfort Control does not control the system operation when the system is running in the **CA** Mode. Any changes in the Communicating Comfort Control programming made during the **CA** mode of operation will become effective after the **CA** mode ends.

NOTE: Charge Assist™ **IS NOT** allowed when a heat pump is operating in the heating cycle. If the mode button is pressed during an active compressor heat call, the CHARGING (STABILIZING) LED will flash 10 times indicating that CA is not allowed. Once an active call for compressor heat has ended, CA may be entered.

CAUTION: Minimum equipment off time is bypassed during Charge Assist™. Avoid cycling compressor quickly. Observe the recommended 5-minute minimum off time for compressor protection.

Charge Assist™ (CA) Procedure for a NON-Communicating 24VAC Control System

STEP 1:

Outdoor units coupled with 24 volt indoor units (outdoor units require BAYACHP024* for 24V operation) require the technician to set up the Variable Speed (VS) Air Handler or VS Furnace with the DIP switches for the size of the equipment installed. (Unit tonnage, CFM per ton 350, 400, 450 required, the blower delays and Heating airflow) CA cycle is compatible with ENHANCED Mode.

STEP 2:

A technician must set the indoor system control to call for the **SECOND STAGE of COOLING**. The indoor **CONTROL** must be **set low enough** to ensure the system continues to run in **SECOND STAGE of COOLING** throughout the **CA mode CYCLE**. The CA control will exit the **CA mode CYCLE** if the system control does not stay in the **SECOND STAGE** cooling cycle. (The CA Control must see 24 Volts AC call on both Y1 and Y2.)

STEP 3:

Press the mode button on the **CA** board and follow the **CA** procedures starting with **STEP 1** in the **Communicating Comfort Control Section** above.

STEP 4:

After the **CA** control exits the **CA mode CYCLE**, the technician must then return the **NON-COMMUNICATING** 24 volt indoor **CONTROL** to the desired customer setting.

SUMMARY OF ALERT CODE & CHARGE ASSIST™ LEDS

LED Color	Fault LED	Alert Code	Description	Control Display	LED Color	Charge Assist™ (CA) LEDs	Description						
Red	1 Flash	90	Excessive Communication Errors	N/A	Green	CHARGED	Flashing	See Charging Flash Rate					
		91	Loss of Heat/Cool Demand Message (COMM)	ERR 91			Off	Charged or not in CA Mode					
			Loss of Bit Master (Clock Signal)				On	Charge is Correct					
	2 Flash	68	Defrost Fault A	N/A		Y1	On	1st stage compressor requests					
	3 Flash		Defrost Fault B and/or C			Y2	On	2nd stage compressor request					
	4 Flash		Defrost Fault A and [B and/or C]			STATUS	Fast Flash	Initialization at Power Up ~ 60 seconds					
	5 Flash	67	Ambient Temperature Sensor Fault (Out of Range - Open or Shorted)	ERR 67			Med Flash	Oil Return Mode ** (Forced Defrost)					
			6 Flash				Coil Temperature Sensor Fault (Out of Range - Open or Shorted)	Slow Flash	Standard operation				
	7 Flash	79	Low Pressure Cut Out Fault (Open outside of defrost Cycle-Hard lock out, cycle power to reset)	ERR 79			Off	Charge Assist™ mode or no power to control					
			Low Pressure Cut Out Fault Heat/Cool Lock out		LitePort	Occasional Flash	For transmitting LitePort™ data						
			Low Pressure Cut Out Fault (Open outside of defrost Cycle-Short lock out)	Wait □		COM	Flashing	Flash device count when in communication (number of COMM products connected in system); Rapid flashes followed by a pause indicates disrupted communications					
	10 Flash	102	Y2 without Y1 - Miswire (24 volt mode only)	N/A	Off		No power						
	11 Flash	67	Liquid Temperature Sensor Fault (Out of Range - Open or Shorted)	N/A	On		Solid at power-up						
	12 Flash	113	Liquid Pressure Sensor Fault (Out of Range - Open or Shorted)	ERR 113	CHARGING	Flashing	See Stabilization Flash Rate						
	13 Flash	67	External Outdoor Temperature Sensor Fault (Out of Range - Shorted)	N/A		Off	Not in CA Mode						
	14 Flash	114	PM Missing with local copy (Operational)	ERR 114	ADD	On	System requires refrigerant charge (Control has 24 volt AC output to Charge Solenoid)						
			Bad Data in PM with local copy (Operational)	N/A				ODT	Flashing	Ambient Temperature is out of range - Ambient Temperature must be above 55°F and below 120°F to enter CA Mode Note: ODT LED will flash 1 sec ON/OFF for 30 seconds and the CHARGING LED will flash 5 times per second for 2 seconds, then exit CA.			
			Bad Data in PM no local copy (Not Operational)	ERR 114							RECOVER	On	Need to recover refrigerant - Unit locked out for 1 hour or press mode button to exit Charge Assist™
			PM Missing with no local copy (Not Operational)										
	15 Flash *	50	Duplicate OD Temperature Sensor *	N/A	LOW	On	Liquid pressure below 90 psig - Liquid pressure must be above 90 psig to enter CA Mode Note: LOW pressure LED will be on for 30 seconds and the CHARGING LED will flash 5 times per second for 2 seconds, then exit CA.						
	16 Flash *	123	Demand Configuration Fault *	N/A									
	17 Flash	80	High Presure Monitor Fault (Hard lock out, cycle power to reset)	ERR 80				Notes:	** Used with 20 SEER Models				
			High Presure Monitor Fault (Short lock out)	Wait □									
	18 Flash	18	24V Sensing Error (24V Missing at Y1)	ERR 18									
Notes:	4 highest priority Faults display flash codes sequentially. 2 second pause between faults and 4 second pause between sequences. Cycle power to ODU to clear Faults. * Alert flash code will not be implemented for initial release □ Wait icon will appear on the Comfort Control during: Equipment minimum off time, Charge Assist, Short lock out (see Alert Codes "7 Flash" & "17 Flash")												

SUMMARY OF ALERT CODE & CHARGE ASSIST™ LEDS (CONTINUED)

NOTES:	A working Ambient Temperature Sensor is needed for the following:	The Comfort Control <i>Wait</i> icon will be ON for the following:
	<ul style="list-style-type: none"> - LPCO Monitor - Charge Assist (Use Ambient Sensor only) Do not revert to External ODT Sensor if present and Ambient Sensor has failed. - Defrost (Heat Pump Models Only) Do not revert to External ODT Sensor if present and Ambient Sensor has failed. - Comfort Control (ODT display) - Aux Heat control during Defrost - Humidifier Dew-Point Control - Compressor Lock Out - Aux Heat Lock Out - Oil Return Mode 	<ul style="list-style-type: none"> - Minimum equipment off time (5 min.) - During Low or High Pressure monitor "short lockout" (5 min) - During Power-Interrupt protection (1 min.) - During Charge Assist™

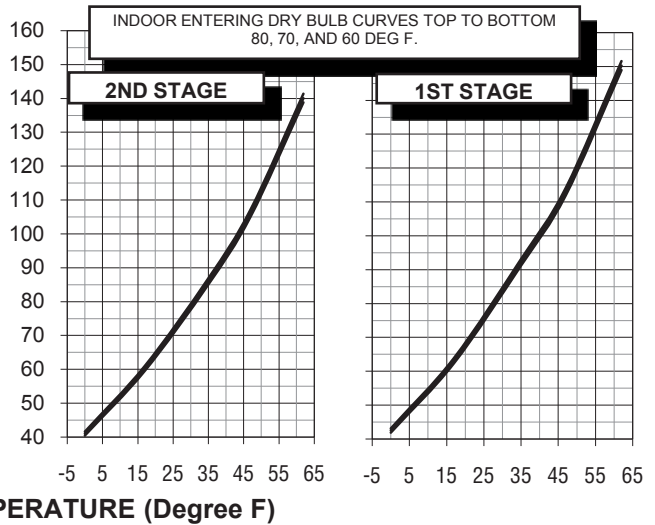
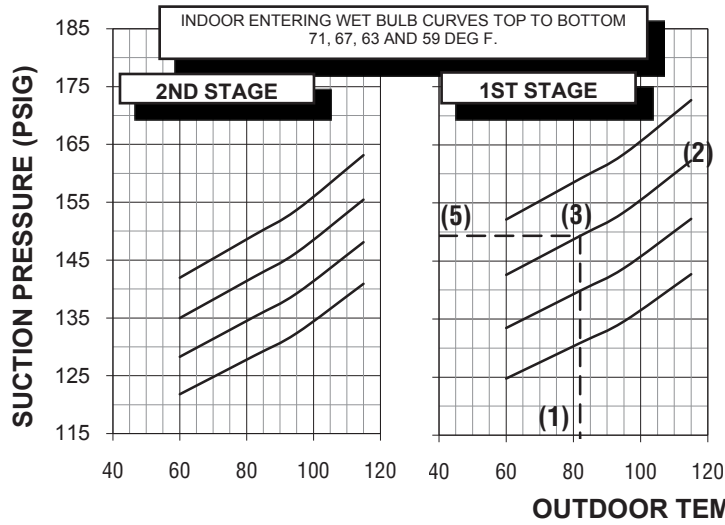
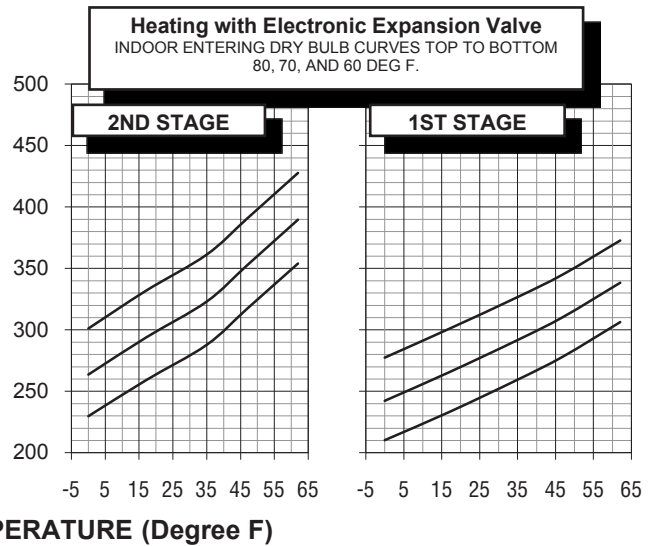
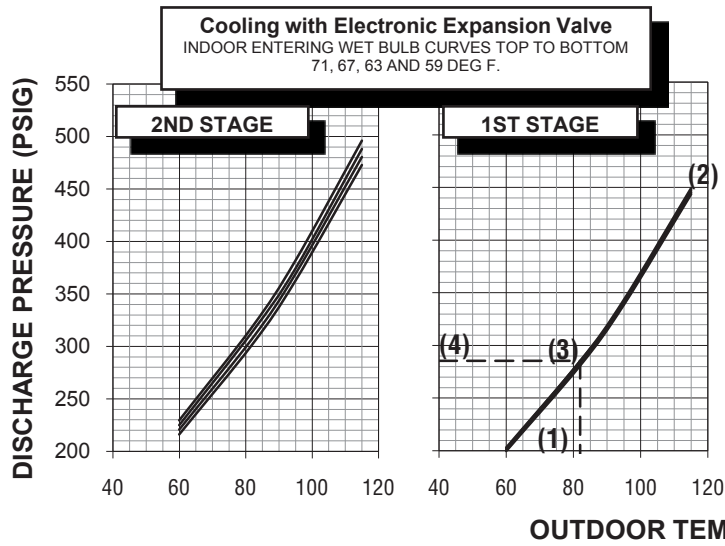
FLASH RATE SUMMARY

CA™ procedure allows 1 hour to get within 20 psi of "Charged" and 50 minutes to move 4 psi, Otherwise Time Out

"CHARGED" LED (GREEN)	
ON	Charge is Correct
BLINKING	1 sec. ON/OFF = 15-20 PSI off target
	3/4 sec. ON/OFF = 10-15 PSI off target
	1/2 sec. ON/OFF = 5-10 PSI off target
	1/4 sec. ON/OFF = 0-5 PSI off target
"CHARGING" (STABILIZING) (AMBER LED)	
BLINKING	1 sec ON/OFF = 6-20 minutes away from a steady operating state.
	3/4 sec. ON/OFF = 5-6 minutes away from a steady operating state.
	1/2 sec. ON/OFF = 2-4 minutes away from a steady operating state.
	1/4 sec. ON/OFF = 1/2 - 2 minutes away from a steady operating state.
	Flash 10 times = indicates that Charge Assist™ is not allowed
"RECOVER" (RED LED)	
ON	Exit Charge Assist™ - need to recover refrigerant
"ADD" (AMBER LED)	
ON	System requires refrigerant charge (Control has turned on the 24 volt AC output) Use Charge Assist™ Tool (#BAYCAKT001AA)

PRESSURE CURVES FOR 4TWZ0036B1 **TAM7A0C36H31**

TAM7A0C36H31



COOLING PERFORMANCE CAN BE CHECKED WHEN THE OUTDOOR TEMP IS ABOVE 65 DEG F.

TO CHECK COOLING PERFORMANCE, SELECT THE PROPER INDOOR CFM, ALLOW PRESSURES TO STABILIZE. MEASURE INDOOR WET BULB TEMPERATURE, OUTDOOR TEMPERATURE, DISCHARGE AND SUCTION PRESSURES. ON THE PLOTS LOCATE OUTDOOR TEMPERATURE (1); LOCATE INDOOR WET BULB (2); FIND INTERSECTION OF OD TEMP. & ID W.B. (3); READ DISCHARGE OR SUCTION PRESSURE IN LEFT COLUMN (4).

EXAMPLE: (1) OUTDOOR TEMP. 82 F.
(2) INDOOR WET BULB 67 F.
(3) AT INTERSECTION
(4) DISCHARGE PRESSURE @ 590 CFM IS 285 PSIG.
(5) SUCTION PRESSURE @ 1160 CFM IS 149 PSIG.

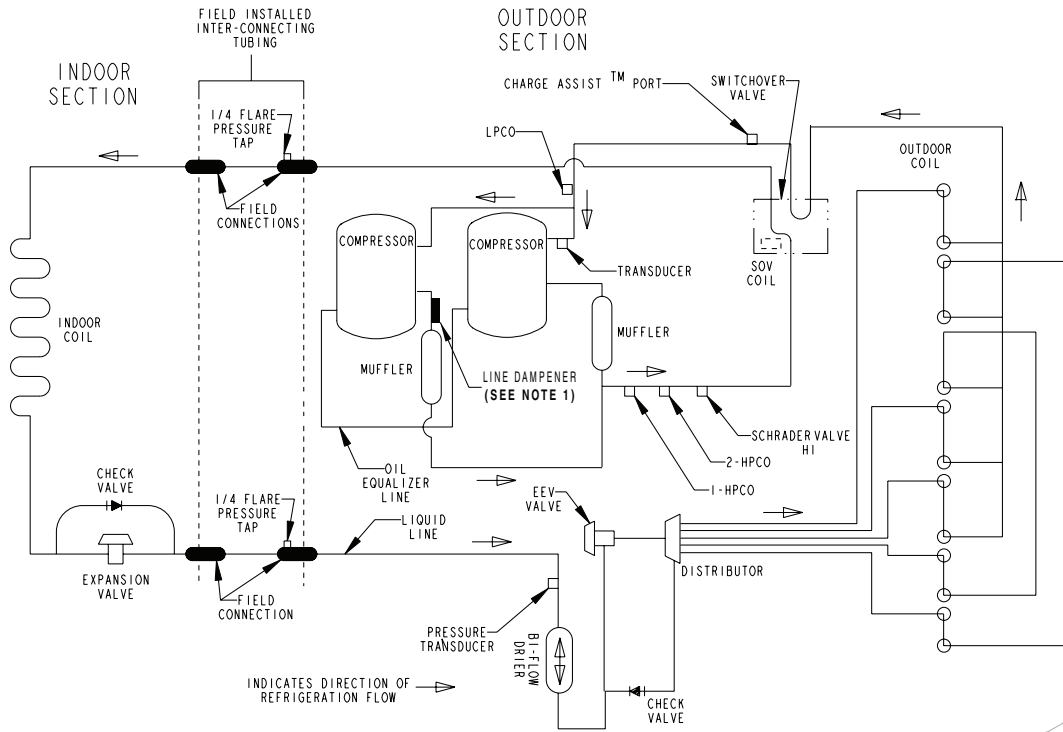
ACTUAL:
DISCHARGE PRESSURE SHOULD BE +/- 10 PSI OF CHART
SUCTION PRESSURE SHOULD BE +/- 3 PSIG OF CHART

INTERCONNECTING LINES
GAS - 3/4" O.D.
LIQUID - 3/8" O.D.

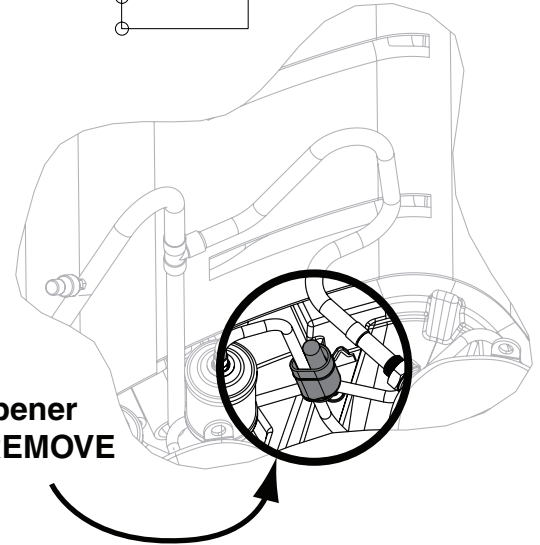
DWG.NO. 4TWZ0036B1

REFRIGERATION CIRCUITS

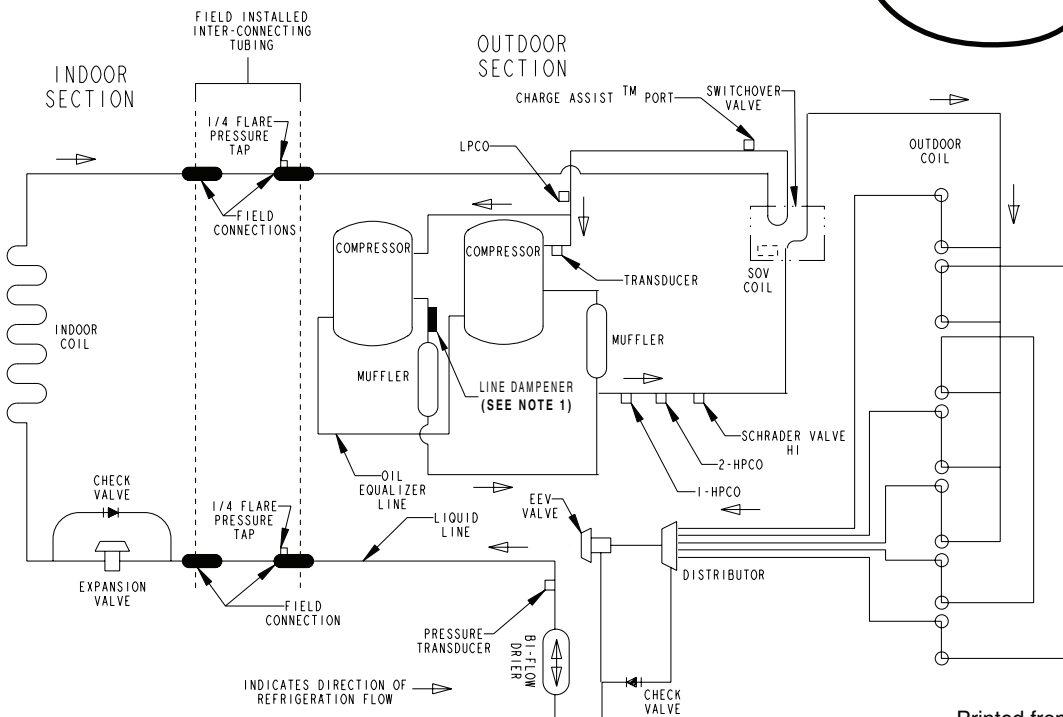
Heating Refrigeration Cycle



NOTE 1:
Line Dampener
DO NOT REMOVE



Cooling Refrigeration Cycle



CONTROL BOARD TEST POINTS

Test DC voltages at the locations shown below. Corresponding tables show proper values or ranges.

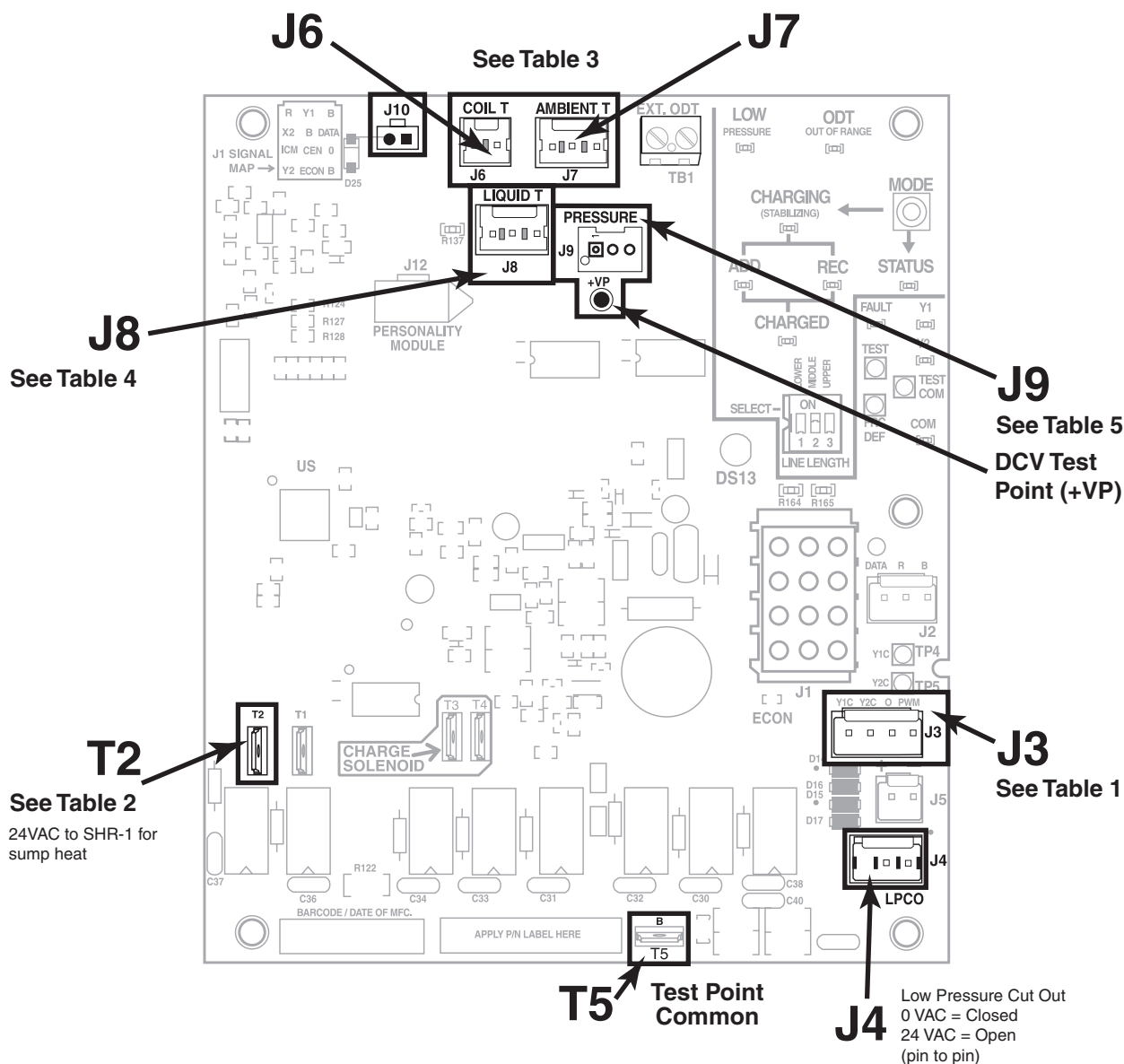


TABLE 1
20 SEER Outdoor ECM Fan Control Signals

Cooling & Heating Speed	Volts DC at plug J3-PWM (to test point common)
Low Stage	5 to 7
High Stage	7.5 to 10
Defrost Soft-Switchover	0.5

TABLE 2
Sump Heat Control - T2

Sump Heat ON	At power up (10 hours max) if compressors remain OFF
Sump Heat OFF	When a compressor is running
Sump Heat OFF	For 30 minutes after compressor(s) have stopped running
Sump Heat OFF	When outdoor temperature goes above 85°F (sump heat remains off down to 75°F)

Note: The system is designed so that a compressor and sump heat will not run at the same time

TABLE 3
Ambient and Coil Sensors - J6, J7

<i>Temp °F</i>	<i>Temp °C</i>	<i>THERMISTOR RESISTANCE (OHMS)</i>	<i>Volts DC at plug J6 & J7 Only (pin to pin)</i>
0	-17.8	83247	3.29
5	-15.0	71108	3.11
10	-12.2	60916	2.93
15	-9.4	52333	2.74
20	-6.7	45076	2.55
25	-3.9	38927	2.37
30	-1.1	33703	2.19
35	1.7	29253	2.02
40	4.4	25452	1.85
45	7.2	22198	1.70
50	10.0	19405	1.55
55	12.8	17002	1.41
60	15.6	14930	1.28
65	18.3	13138	1.17
70	21.1	11586	1.06
75	23.9	10238	0.96
80	26.7	9065	0.87
85	29.4	8043	0.78
90	32.2	7150	0.71
95	35.0	6368	0.64
100	37.8	5682	0.58
105	40.6	5079	0.53
110	43.3	4548	0.48
115	46.1	4079	0.43
120	48.9	3665	0.39
125	51.7	3298	0.35
130	54.4	2972	0.32
135	57.2	2683	0.29
140	60.0	2425	0.27
145	62.8	2195	0.24
150	65.6	1990	0.22

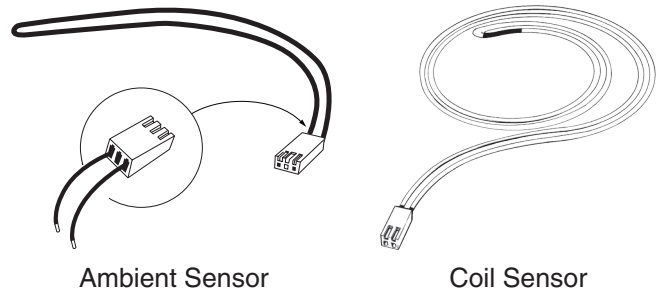
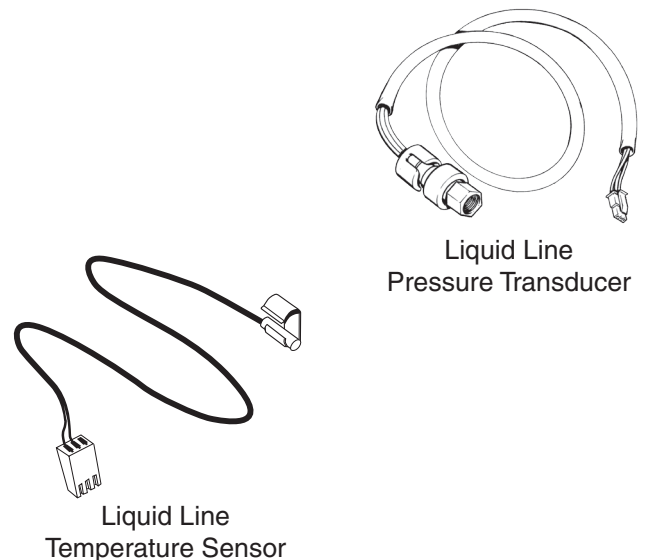


TABLE 5
Liquid Line
Pressure Transducer - J9
Voltage to pressure reference chart

<i>Pressure (PSIG)</i>	<i>Volts DC at plug J9 Test Point (+VP) (to test point common)</i>
30	0.66
60	0.83
90	1.00
120	1.18
150	1.35
180	1.52
210	1.69
240	1.86
270	2.03
300	2.21
330	2.38
360	2.55
390	2.72
420	2.89
450	3.06
480	3.23
510	3.41
540	3.58
570	3.75
600	3.92
630	4.09
660	4.26

TABLE 4
Liquid Line Temperature Sensor - J8

<i>Temp °F</i>	<i>Temp °C</i>	<i>THERMISTOR RESISTANCE (OHMS)</i>	<i>Volts DC at plug J8 Only (pin to pin)</i>
50	10.0	19405	2.22
55	12.8	17002	2.06
60	15.6	14930	1.90
65	18.3	13138	1.75
70	21.1	11586	1.61
75	23.9	10238	1.48
80	26.7	9065	1.36
85	29.4	8043	1.24
90	32.2	7150	1.14
95	35.0	6368	1.04
100	37.8	5682	0.95
105	40.6	5079	0.86
110	43.3	4548	0.79
115	46.1	4079	0.72
120	48.9	3665	0.66
125	51.7	3298	0.60



ELECTRONIC EXPANSION VALVE (EEV) CONTROL BOARD

Status LED (Green)

On - Control has power

Flashing Fast - Control is driving valve (5 seconds max drive time)

Flashing Pattern - See Table 6.

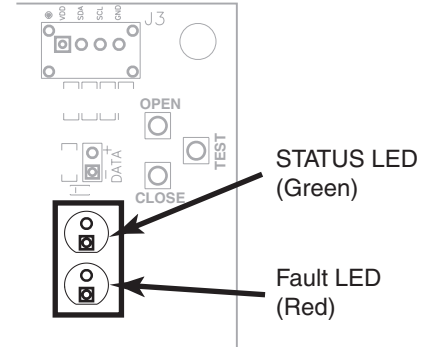


TABLE 6
Control Input and Status LED - J6

EEV control		STATUS LED										24 VAC at plug J6					
Heat	Standby	ON Continuous										B to R					
	1st Stage	ON	OFF					ON	OFF					B to R & Y1			
	2nd Stage	ON	OFF	ON	OFF				ON		ON	OFF			B to R, Y1 & Y2		
Cool	Standby	OFF	ON					OFF	ON					B to R & O			
	1st Stage	ON	OFF									B to R, Y1 & O					
	2nd Stage	ON	OFF	ON	OFF							B to R, Y1, Y2 & O					
		<div><div>1 sec</div><div>2 sec</div><div>3 sec</div><div>4 sec</div></div>															

Fault LED (Red)

LED Color	EEV Fault LED	Description
Red	OFF	Standby
	1 Flash	Coil has an open circuit or intermittent short (Replace Coil)
	2 Flash	Control has detected an internal failure (Replace EEV control board)
	3 Flash	Suction Pressure Transducer input is out of range (Replace transducer) (1)
	4 Flash	Suction Temperature Sensor input is out of range (Replace sensor) (1)
	5 Flash	Coil has short circuit (Replace Coil) (2)
	The following may require additional diagnostics	
	6 Flash	Valve is not responding to a position change command (Possible stuck valve)
	7 Flash	Valve is responding but system is not performing properly (Low charge or restriction)
	8 Flash	Compressor is not pumping (3)
	9 Flash	Low superheat in Cooling Mode (Indoor TXV stuck open or ID Fan failure)
	10 Flash	Not used at this time
EEV Fault Codes		
Notes:	EEV not used on all models (1) Valve will close and LPCO will trip (2) Power supply will shut down to protect board (3) Monitor superheat and pressure: <3' SH for 5 minutes with valve @ minimum position, Monitor off-cycle pressure and compare to next on-cycle for pressure drop within 60 seconds	

Printed from D802247P01 Rev08

Fault Storing/Clearing:

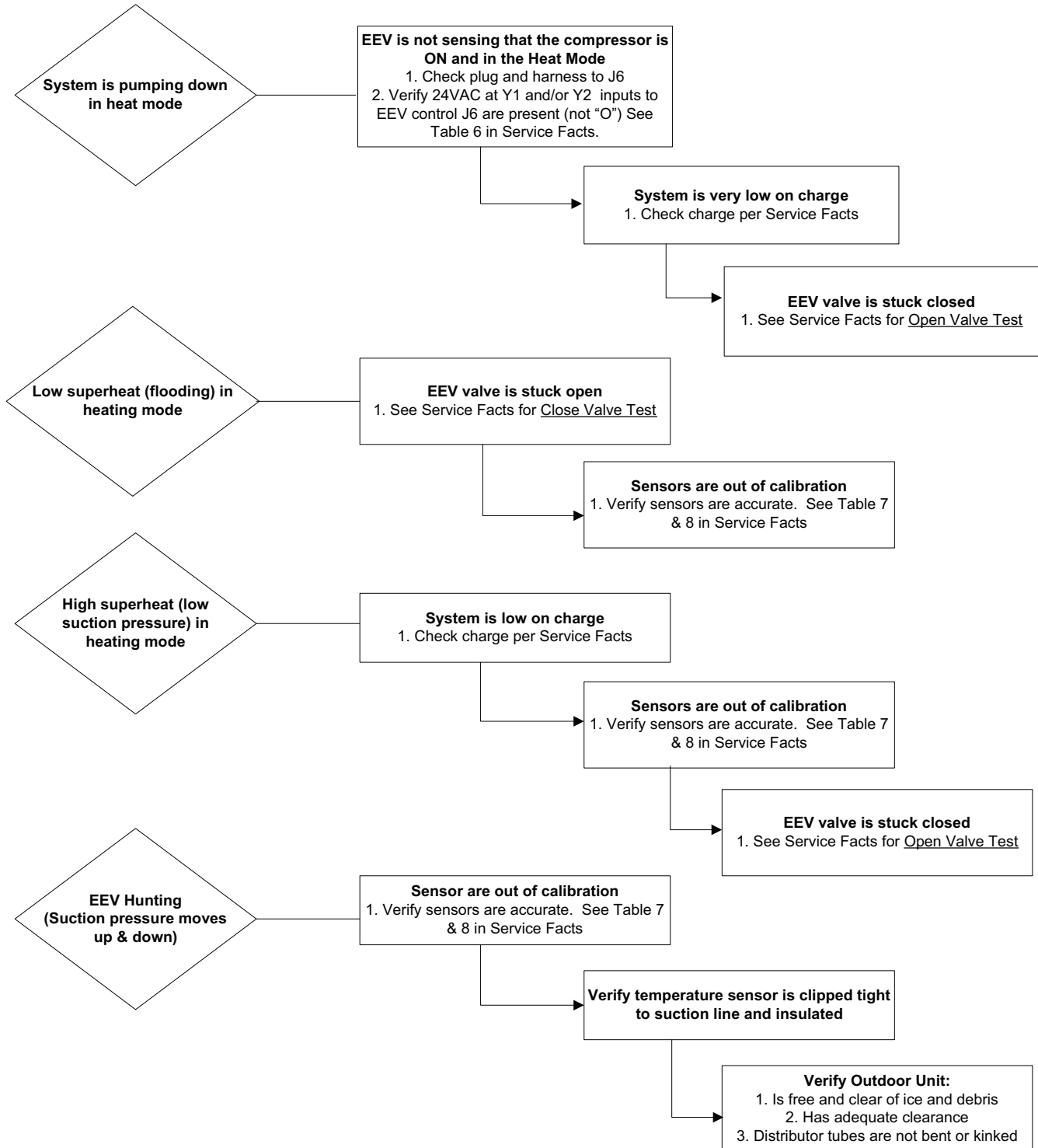
Faults 6-9 will be stored in non-volatile memory. See Close Valve Test for fault clearing procedure.
Faults 1-5 will clear with a power cycle.

TROUBLESHOOTING THE EEV

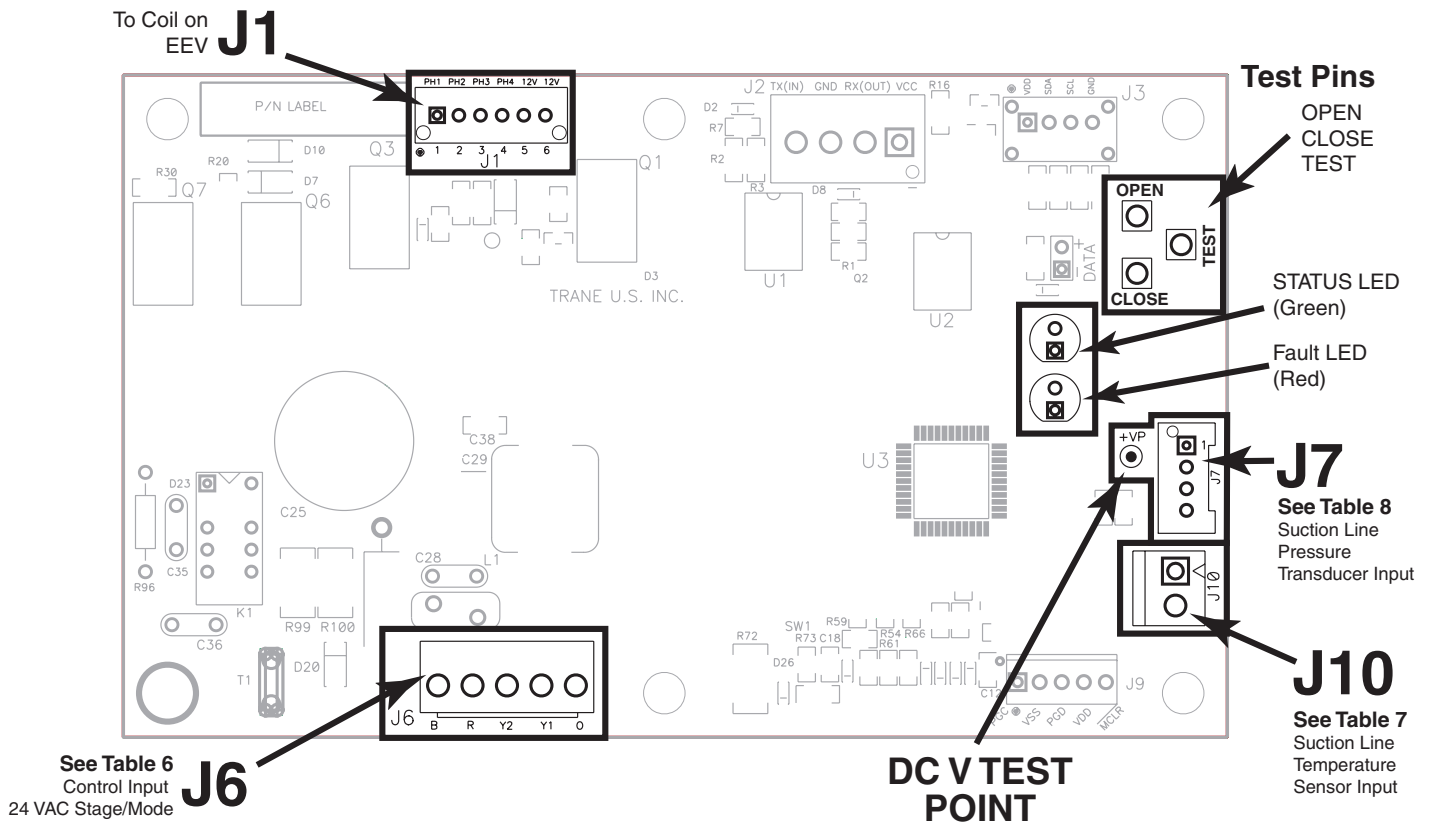
The **Electronic Expansion Valve (EEV)** installed in this heat pump is designed to control superheat entering the compressor when the system is running in mechanical heating mode. During cooling mode, refrigerant flow bypasses the EEV via a check valve and is controlled by the expansion device in the indoor unit. Therefore, **any operational problems observed in cooling mode are not caused by the EEV.**

The following flow chart was designed to assist in troubleshooting the EEV.

Note: The EEV closes with every OFF cycle in the heating mode of operation. During Defrost and in the cooling mode of operation, the EEV will drive to 1/2 open. An audible sound can be heard when valve is changing positions.



EEV CONTROL BOARD TEST POINTS



Note: Close Valve and Open Valve Tests are active in any mode of operation

Test Pins: OPEN, CLOSE, TEST (See EEV Board drawing for locations)

Close Valve Test - Touch CLOSE pin to TEST pin.

EEV drives closed (5 seconds max) and stays closed for 1.5 minutes (90 seconds).

- 1) Status LED will be flashing.
- 2) Gauges should indicate suction pressure dropping.
 - Valve is working.
 - LPCO may trip.

Note: The Close Valve Test will exit after 1.5 minutes (90 seconds) and will not reinitiate (requires a break and make to initialize). To clear faults stored in memory, apply a jumper between Close and Test pins for 10 seconds.

Open Valve Test - Touch OPEN pin to TEST pin.

EEV drives open (5 sec max) and stays open for 30 seconds.

- 1) Status LED will be flashing.
- 2) Temperature probe should indicate superheat falling.
 - Valve is working.

Note: If jumper is left on pins, the OPEN VALVE TEST will be cleared after 30 seconds and will not reinitiate (requires a break and make to reinitialize).

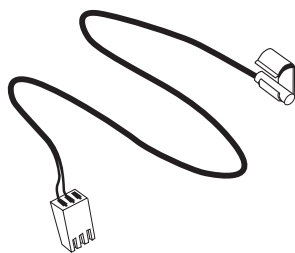
Exit Test Mode - The Open Valve Test or Closed Valve Test can be cancelled by jumping to the opposite mode Test pin. The system will return to normal super heat control.

Test mode will cancel if:

- 1) Unit enters Defrost
- 2) Stage-Delay occurs
- 3) Y1 or Y2 input(s) are lost

TABLE 7**Suction Line Temperature Sensor - J10**

<i>Temp °F</i>	<i>Temp °C</i>	<i>THERMISTOR RESISTANCE (OHMS)</i>	<i>Volts DC at Plug J10 (pin to pin)</i>
0	-17.8	83247	3.87
5	-15.0	71108	3.73
10	-12.2	60916	3.57
15	-9.4	52333	3.41
20	-6.7	45076	3.25
25	-3.9	38927	3.08
30	-1.1	33703	2.91
35	1.7	29253	2.73
40	4.4	25452	2.56
45	7.2	22198	2.39
50	10.0	19405	2.22
55	12.8	17002	2.06
60	15.6	14930	1.90
65	18.3	13138	1.75
70	21.1	11586	1.61
75	23.9	10238	1.48
80	26.7	9065	1.36
85	29.4	8043	1.24
90	32.2	7150	1.14
95	35.0	6368	1.04
100	37.8	5682	0.95
105	40.6	5079	0.86
110	43.3	4548	0.79
115	46.1	4079	0.72
120	48.9	3665	0.66
125	51.7	3298	0.60
130	54.4	2972	0.54
135	57.2	2683	0.50
136	57.8	2629	0.49
137	58.3	2576	0.48
138	58.9	2525	0.47
139	59.4	2474	0.46
140	60.0	2425	0.45
141	60.6	2377	0.45
142	61.1	2330	0.44
143	61.7	2284	0.43
144	62.2	2239	0.42
145	62.8	2195	0.41
146	63.3	2153	0.41
147	63.9	2111	0.40
148	64.4	2070	0.39
149	65.0	2030	0.39
150	65.6	1990	0.38

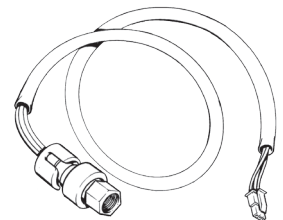


Suction Line
Temperature Sensor

TABLE 8**Suction Line****Pressure Transducer - J7**

Voltage to pressure reference Chart

<i>Pressure (PSIG)</i>	<i>Volts DC at plug J7 (to test point common)</i>
34	0.8
41	0.9
51	1.0
60	1.1
70	1.2
80	1.3
89	1.4
99	1.5
108	1.6
118	1.7
130	1.8
140	1.9
147	2.0
159	2.1
169	2.2
178	2.3
188	2.4
198	2.5



Suction Line
Pressure Transducer



Trane
www.trane.com



Trane has a policy of continuous product and product data improvement and it reserves the right to change design and specifications without notice.